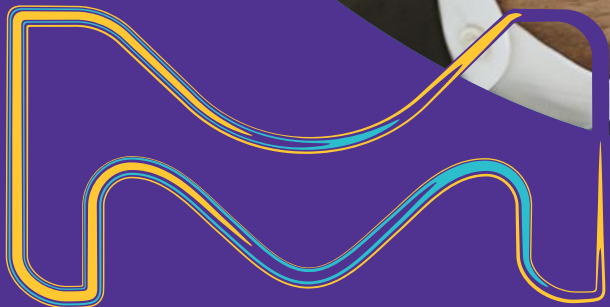


AZ[®] EXP MIR 701 Thick Film 29CPS

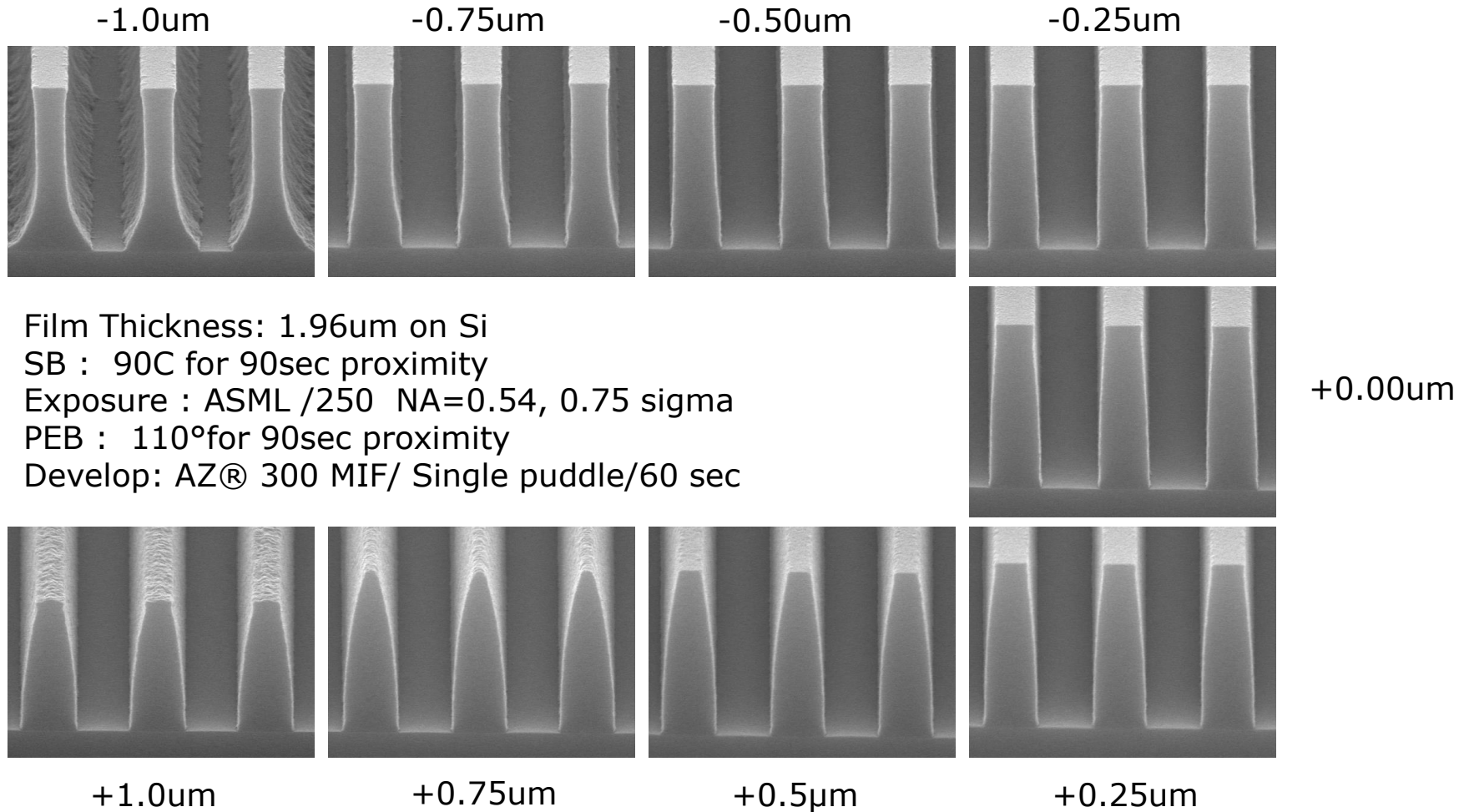
Additional Data Package



MERCK

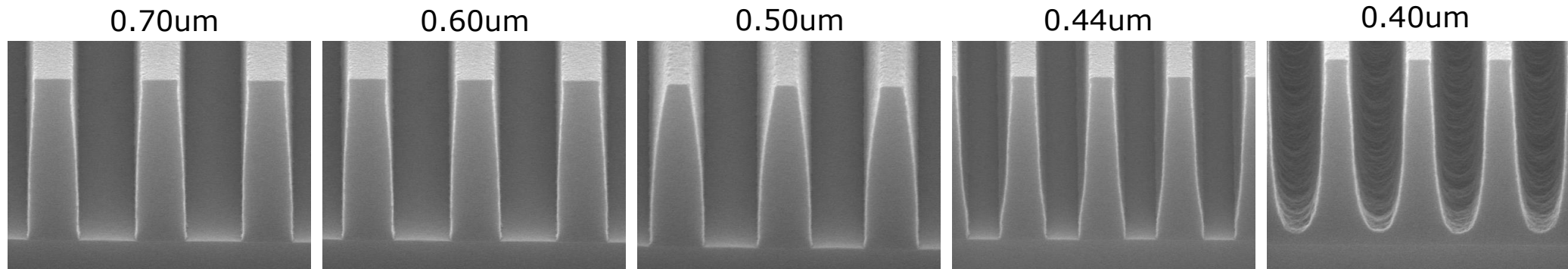
AZ MiR701 29cPs: Depth of Focus

0.6 μ m Dense Lines @ 280 mJ / 1:1 pitch



AZ MiR701 29cPs: Linearity

Linearity @ 280 mJ / 1:1 pitch



Film Thickness: 1.96um on Si
SB : 90C for 90sec proximity
Exposure : ASML /250 NA=0.54, 0.75 sigma
PEB : 110°for 90sec proximity
Develop: AZ® 300 MIF/ Single puddle/60 sec